

# OCEAN BLUE CREW

VOL. 2, ISSUE 2 | OCTOBER 2021

Newsletter



## INTRODUCTION

Ahoy matey! The Ocean Blue Crew from the Clearwater Marine Aquarium is here to give you some nautical knowledge about our incredible ocean.

Did you know that early last month we celebrated National Wildlife Day? We have quite a few residents who call CMA home, although they once lived in the wild. Some of our residents were once someone's pet before they came to live with us as an animal ambassador. Walle, a resident river otter, became a part of the CMA family when his caretaker realized he could no longer care for a rescued wild animal on his own!

In this issue, you will learn about the importance of keeping a wild animal WILD!



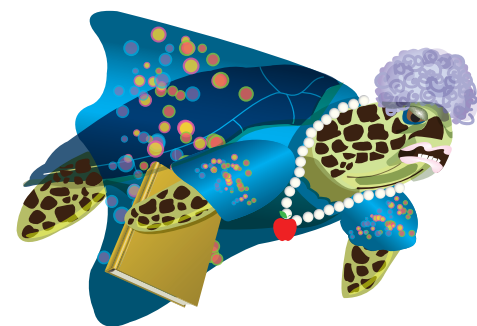
Captain  
Squid Squidley

### CAPTAIN'S LOG

At Clearwater Marine Aquarium, we devote ourselves to rescuing, rehabilitating, and returning marine animals to their natural habitat. As a working marine animal hospital, all the animals at CMA are either sick, injured, or recovering from an incident. All the animals are still considered wild, but they require some extra help from us to survive. We must remember these animals are not considered "pets" because we have permits from the government to care for these animals.

In November 2012, we added a new member to the CMA family: Walle, the North American river otter! Walle joined us after his caretaker realized how much work taking care of an otter can be. Walle was initially rescued by his caretaker who thought he was doing the right thing by keeping him as a pet. After releasing him back into the wild, Walle continued to return to his caretaker's boat as an otter would do with its family. Otters are not born with instincts and must learn survival skills from their parent. His former caretaker then transported Walle to a wildlife rehabilitator. Since Walle lacks the necessary survival skills to survive in his natural habitat, he cannot return to the wild. Shortly after, the Florida Fish and Wildlife Conservation Commission contacted us to ask if Walle could call CMA his forever home. Of course, we said YES! Walle's story is a great example of why wild animals do not make good pets and should only be cared for by professional organizations.

Teacher Turtle is going to teach you more about protecting wild animals who are still in their natural habitat!



Teacher Turtle

What does it mean to be threatened, endangered, or extinct?

A threatened species means that the species will likely become endangered due to low population numbers, while an endangered species is in danger of becoming extinct. An extinct species no longer exists in the wild. We want to do everything we can to protect the animals we still have, preventing them from becoming threatened, endangered, or extinct! There are already quite a few species of animals considered to be threatened, endangered, or extinct. Did you know that six out of seven sea turtle species are considered threatened or endangered? We can help protect these sea turtle species from becoming extinct by cleaning up trash in the water, filling in holes on the beach during sea turtle nesting season, and admiring these animals from a safe distance.

As we learned before, Walle was rescued, and CMA is able to provide a safe home for him. Although you cannot bring rescued wild animals into your home, there are many ways we can all play a role in keeping these wild animals in their natural habitats. In doing so, we can ensure that these wild animal populations continue on for many generations to follow.

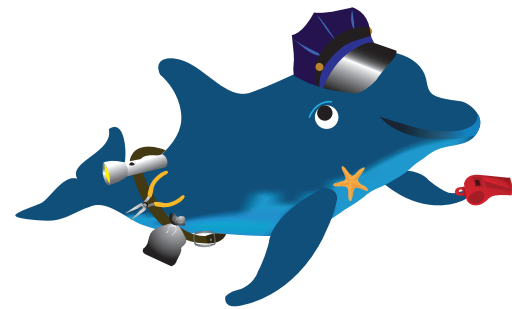
Now, it is time for Observation Otter to show you where some wild animals live in their natural habitat!



## ObSerVation otter

Match the animals on the left side to the appropriate natural habitat photo on the right side!





Deputy DOLPHIN

How can you play a role in keeping wild animals in their natural habitat?

First, admire, appreciate, and learn from wild animals from a distance. While it may seem like a good idea to move closer to, touch, feed, or care for the animal in our own homes, these actions could injure, frighten, or alarm the animal further. Next, if you see an injured animal and think that the animal is sick or injured, call for help! You can start by contacting the closest rescue organization. By trying to help a wounded or stranded animal, you could accidentally harm the animal. The safest option is always to call a professional and follow their instructions until they arrive. If it wasn't for people like you, we would never know where the animals are who need help! Lastly, but certainly not least, educate others! The more you know, the more you have the opportunity to share. On National Wildlife Day and every other day of the year, we all can play our part in preserving the wildlife we still know and love.

Check with Creative Crab to learn about one way we can preserve the environment!



Creative Crab

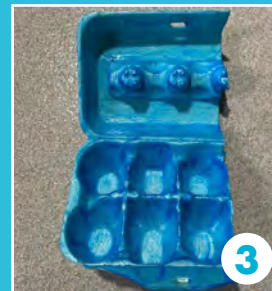
Creative Crab here to show you how you can re-purpose an egg carton! Re-purposing household items helps reduce the amount of trash sent to a landfill and gives the items a second life! Let's make our very own ocean so all of our favorite marine animals have a safe, clean home!

## You Will Need:

- 1 recycled egg carton from a dozen eggs
- Pipe cleaners
- Googly eyes
- Scissors
- Glue
- Markers
- Paint
- Paintbrush

## Directions

1. Cut a recycled egg carton in half.
2. Cut out the 6 egg cavities from one half of the carton.
3. Paint the other half of the egg carton to resemble the ocean.
4. Paint or color each of these egg cavities to resemble marine life.  
We made a crab, sea turtle, whale, and octopus, but you can make any animals you want!
5. Add pipe cleaners, googly eyes, foam, or any other material needed to transform each egg cavity into an animal!
6. Once all the paint has dried, place each of the animals in the ocean you painted!





Chef Shark

Chef Shark is here to teach you a new turtle-y awesome recipe! Here at CMA, sea turtles are the most commonly rescued, rehabilitated, and released patients. Our recipe today will transform an everyday snack into a sea turtle!

#### You Will Need:

- Thin sandwich rounds
- Peeled kiwi
- Raisins
- Scissors or a dull knife
- Green grapes
- Peanut butter
- A parent or guardian

#### Directions:

1. With the help of a parent or guardian, cut a small oval, four flipper shapes, and one tail out of the sandwich rounds.
2. Cut up the peeled kiwi into the same size slices as the flippers and the tail that you just cut.
3. Cut the grapes in half, lengthwise. You will need enough grapes to cover one whole sandwich round.

4. On a plate, arrange each piece of bread to resemble a sea turtle.
5. Cover the large sandwich round in the center (the "carapace," or shell) with peanut butter (as much as you like).
6. Place each of the kiwi slices on top of the flippers and tail.
7. Place the halved grapes on the carapace, in any pattern you choose.
8. Place two raisins (or one, sliced in half) on top of the oval kiwi slice, resembling eyes on the head.
9. Serve and enjoy!

NOTE: If you have a peanut allergy, try using sunflower butter or another nut-free alternative!





## PLAYTIME PELICAN

Spot the differences between the two environments below!  
Which of these items do not belong?

Environment 1:



Answers on last page



## PLAYTIME PELICAN

Spot the differences between the two environments below!  
Which of these items do not belong?

Environment 2:



Answers on last page

# OCEAN BLUE CREW Newsletter



## ANSWER KEY:

### Observation Otter



## Playtime Pelican

### Environment 1:



### Environment 2:

